

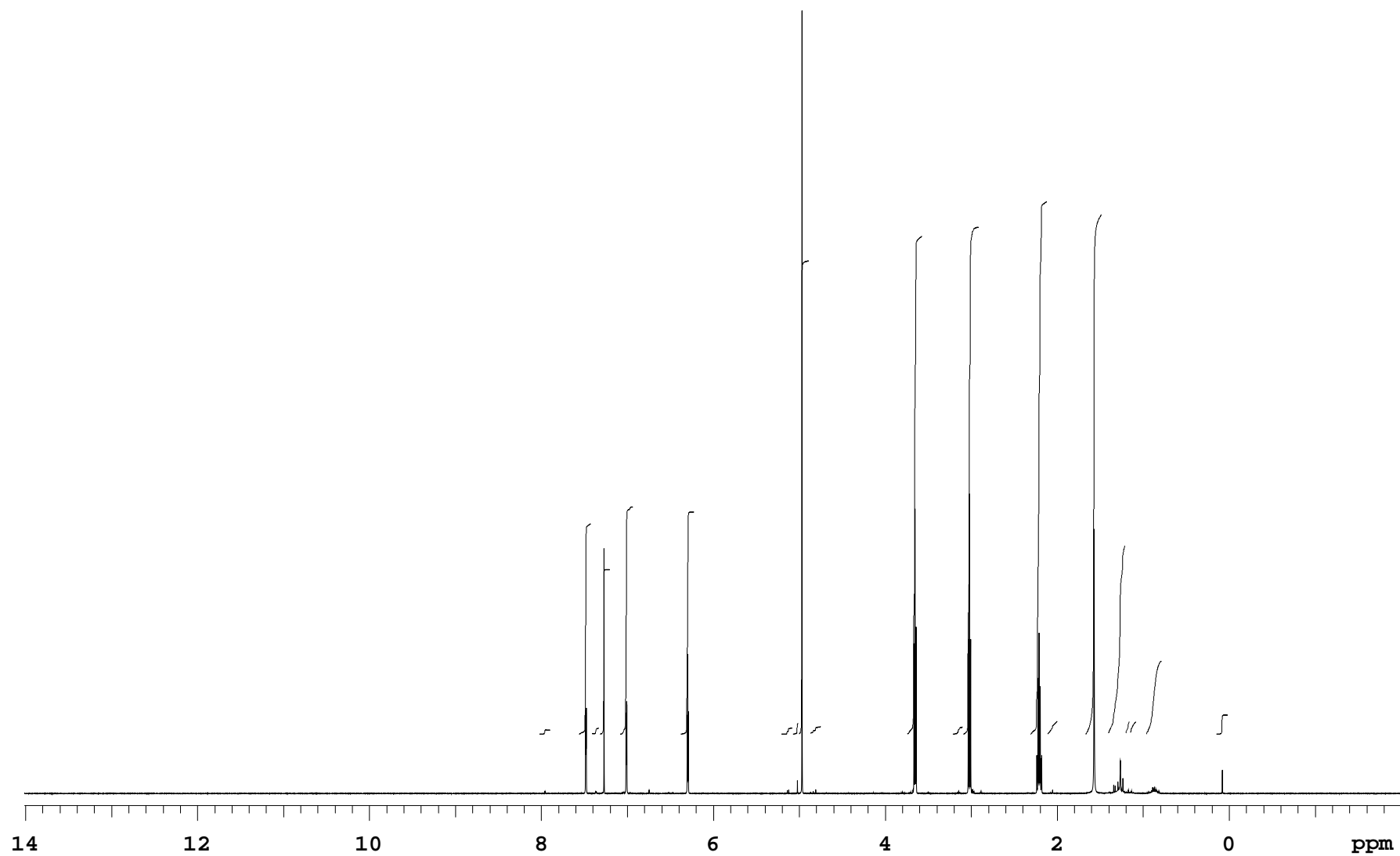
JH431-2d_data_new

Sample Name JH431-2d_data_new
Date collected 2022-10-03

Pulse sequence PROTON
Solvent cdcl3

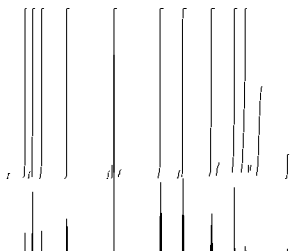
Temperature 25
Spectrometer chpc-nmr500a-vnmrs500

Study owner jh2585
Operator jh2585



JH431-2d_data_new

Sample Name	JH431-2d_data_new	Pulse sequence	PROTON	Temperature	25	Study owner	jh2585
Date collected	2022-10-03	Solvent	cdcl3	Spectrometer	chpc-nmr500a-vnmrs500	Operator	jh2585



INTEGRAL VALUES

Integral	start(ppm)	end	value
1	8.02615	7.89509	0.112
2	7.56352	7.41877	5.653
3	7.41877	7.32487	0.161
4	7.32487	7.19674	4.420
5	7.09111	6.93266	6.111
6	6.37907	6.21866	5.979
7	5.2044	5.07627	0.162
8	5.07529	5.00683	0.304
9	5.00585	4.88554	12.735
10	4.87381	4.74764	0.201
11	3.74608	3.56612	13.393
12	3.21108	3.09371	0.186
13	3.09371	2.90787	13.635
14	2.31027	2.11563	14.320
15	2.11465	1.99239	0.355
16	1.66669	1.48281	13.981
17	1.41043	1.20504	5.096
18	1.20406	1.15516	0.364
19	1.15516	1.08082	0.346
20	0.969321	0.779574	1.974
21	0.149692	0.0127616	0.513

SAMPLE

date Oct 3 2022
solvent cdcl3
file /home/bath/vnmrsys
/data/jh2585/JH431-2d_da
ta_new_20221003_01/PROTO
N_04.fid

PRESATURATION

satmode n
wet n

SPECIAL

temp 25.0
gain 48
spin 0
hst 0.008
pw90 7.900
alfa 10.000

ACQUISITION

sw 8012.8
at 2.045
np 32768
fb 4000
bs 32
d1 1.000
nt 8
ct 8

FLAGS

il n
in n
dp y
hs nn

TRANSMITTER

tn H1
sfrq 500.059
tof 500.1
tpwr 61
pw 3.950

PROCESSING

fn not used

DISPLAY

sp -1005.6
wp 8012.3
rfi 1006.0
rfp 0
rp 15.4
lp 0

DECOUPLER

dn C13
dof 0
dm nnn
decwave W40_OneNMR
dpwr 39
dmf 32258

PLOT

wc 234
sc 8
vs 35
th 44
ai cdc ph

Plotname: PROTON_04_plot01

Data file /home/bath/vnmrsys/data/jh2585/JH431-2d_data_new_20221003_01/PROTON_04.fid

Plot date 2022-10-03