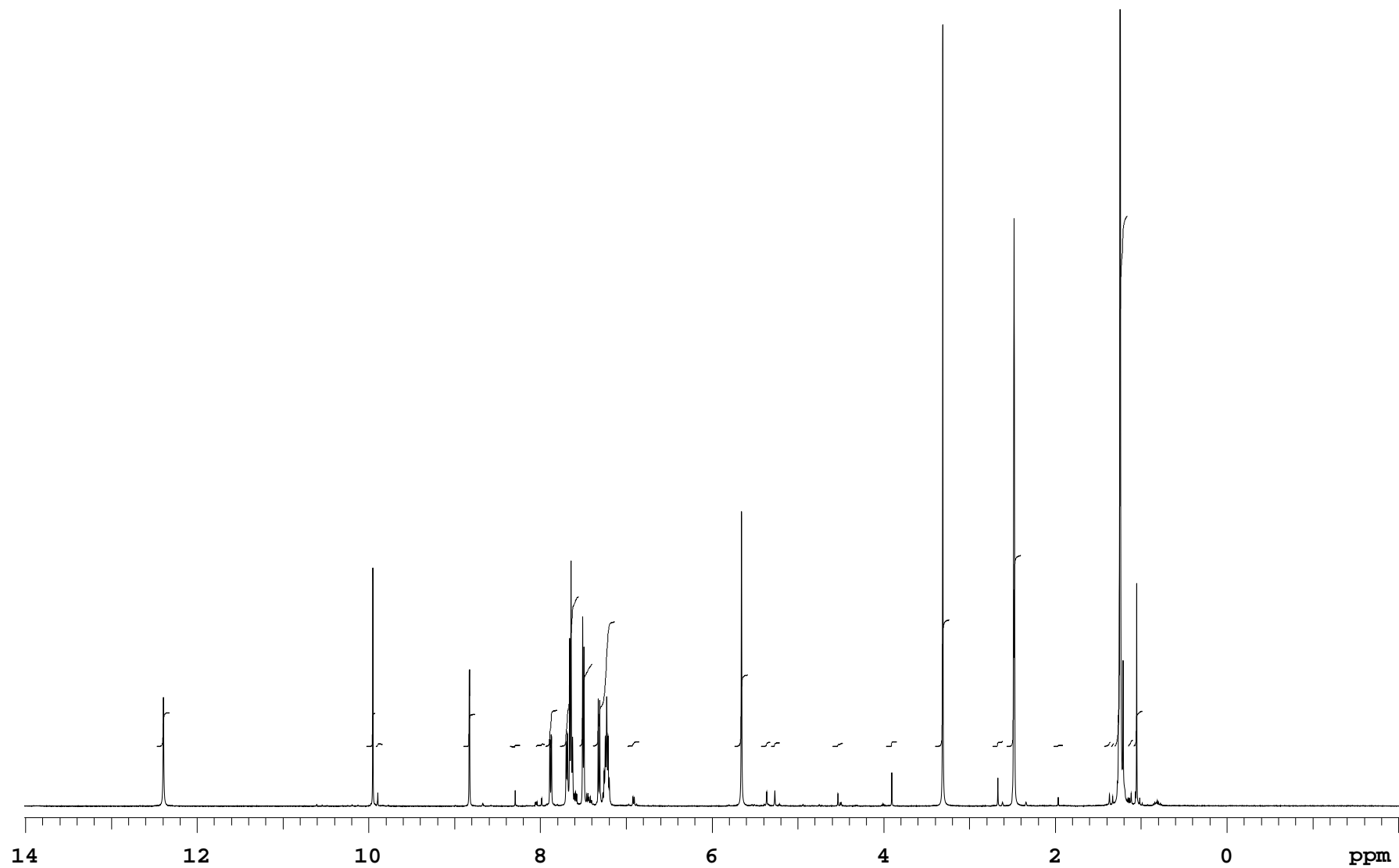


mlo410_dry_-_column_-_11012019

Sample Name **mlo410_dry_-_column_-_11012019** Sequence **PROTON**
Date collected **2019-01-11** Solvent **dms**

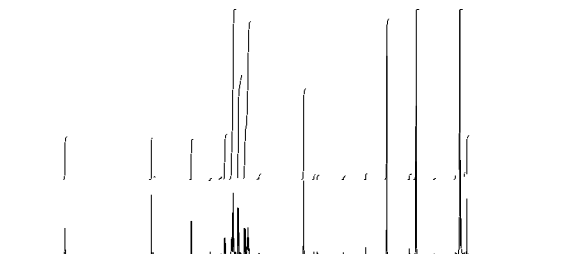
Temperature **25**
Spectrometer **chpc-nmr500a-vnmrs500**

Study owner **mlo22**
Operator **mlo22**



mlo410_dry_-_column_-_11012019

Sample Name	mlo410_dry_-_column_-_11012019	Sequence	PROTON	Temperature	25	Study owner	mlo22
Date collected	2019-01-11	Solvent	dms	Spectrometer	chpc-nmr500a-vnmrs500	Operator	mlo22



INTEGRAL VALUES

Integral	start(ppm)	end	value
1	12.4734	12.3159	2.262
2	10.0282	9.92063	2.239
3	9.92063	9.83162	0.151
4	8.90441	8.75379	2.126
5	8.35963	8.2315	0.058
6	8.05251	7.94395	0.147
7	7.94297	7.80115	2.422
8	7.77474	7.54978	10.046
9	7.54978	7.39231	5.516
10	7.39231	7.12921	8.345
11	6.98837	6.84362	0.306
12	5.74035	5.57604	4.784
13	5.43128	5.31782	0.272
14	5.31685	5.20339	0.252
15	4.59992	4.46984	0.188
16	3.97395	3.83996	0.286
17	3.39787	3.22769	8.479
18	2.73767	2.60368	0.345
19	2.5714	2.39339	12.802
20	2.02563	1.90827	0.054
21	1.43488	1.35174	0.275
22	1.35077	1.31066	0.216
23	1.30969	1.1532	35.630
24	1.15222	1.09255	0.427
25	1.09158	0.97812	2.370

SAMPLE

date Jan 11 2019
solvent dms
file /home/bath/vnmrsys
/data/mlo22/mlo410_dry_-
column-_11012019_20190
111_01/PROTON_01.fid

wet n

SPECIAL

temp 25.0
gain 36
spin 0
hst 0.008
pw90 7.800
alfa 10.000

ACQUISITION

sw 8012.8
at 2.045
np 32768
fb 4000
bs 32
d1 1.000
nt 8
ct 8

FLAGS

il n
in n
dp y
hs nn

PROCESSING

fn not used

TRANSMITTER

tn H1
sfrq 500.062
tof 500.1
tpwr 60
pw 3.900

DISPLAY

sp -1005.6
wp 8012.3
rfi 1006.0
rfp 0
rp -136.0
lp 0

DECOUPLER

dn C13
dof 0
dm nnn
decwave W40_OneNMR
dpwr 38
dmf 32258

PLOT

wc 234
sc 8
vs 117
th 11
ai cdc ph

PRESATURATION

satmode n

Plotname: PROTON_01_plot01